

Agilent SmarTest Program Generator

Product Overview

Streamlining Design-to-Test

For many semiconductor companies, both IDMs and design houses, creating an efficient test-generation process is an ongoing challenge with no simple solution. Agilent Technologies' SmarTest PG (Program Generator) directly addresses this challenge by providing a streamlined Design-to-Test (D2T) process that generates directly loadable test programs for the Agilent 93000 SOC Series of testers.

SmarTest PG is the only solution available that generates tests for the unique technology capabilities of the Agilent 93000 SOC Series tester. By taking advantage of advanced features such as Concurrent Test, SmarTest PG dramatically reduces the time required to generate a test.

SmarTest PG is available in two versions. The full product, SmarTest PG, offers an intuitive user interface that efficiently handles both functional test and scan. SmarTest PG Scan Converter is a subset of the full product that quickly converts STIL or .wgl scan files to the Agilent 93000 SOC Series tester program language via a single line user interface.

Why SmarTest PG?

Agilent SmarTest PG is the most capable solution for SOC and complex IC test requirements because it offers a seamless transition from the EDA environment to the tester. SmarTest PG ensures a streamlined downstream test debug effort and a reduction in Time-to-Volume, whether you are a developer needing a fast turn tool or one who needs to utilize the advanced features of the tester.

• Captures unique 93000 features

Only SmarTest PG supports advanced capabilities of the Agilent 93000 SOC testers such as Concurrent Test and X-modes. Concurrent Test provides a 30-40% tester throughput advantage, dramatically reducing test cost. X-modes provides faster speed, vector compression, and better ability to match SOC device cycles.

• Fast

SmarTest PG's modern software architecture provides fast translation of even the largest files.

With the advanced SmarTest PG features, a test program that once took up to five days to generate can now be created in just hours. The following dramatic time savings have been reported:

- Project setup (tools, data formatting) to prepare the test development—reduced by 80%
- Execution time—reduced by 90%
- Debug validation time—reduced by 30–90%
- Training overhead—dramatically reduced

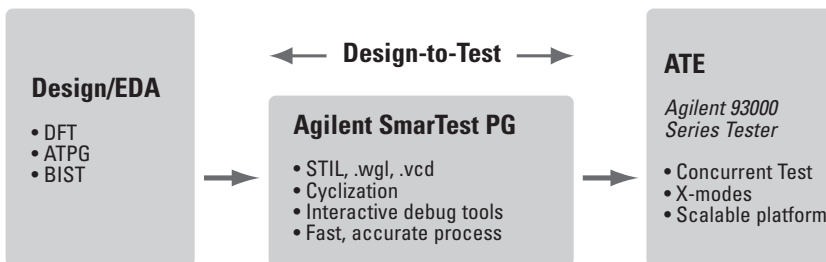
• Supports industry-standard input formats

SmarTest PG accepts input from EDA systems in STIL, .wgl, or .vcd file formats. STIL and .wgl files are accepted from:

- Synopsys TetraMAX
- Mentor Graphics® FastScan and TestKompress
- And others

• Unified SOC data organization

SmarTest PG provides a unique method of handling even the most complex SOCs, one port at a time. After specifying the ports to be tested, SmarTest PG automatically tracks the tester resources used, such as waveforms and edges, as efficiently as possible.



Workstation Requirements

HP-UX Minimum Hardware Requirements

- Machine class: C360 PA-8600 workstation or later
- Memory: 1 GB
- Disk space: 85 MB required for installation including manual and tutorial, 2X design files size disk space required for .vcd patterns, 1X design files size disk space required for STIL/.wgl patterns
- OS versions: 10.2, 11.x

Solaris Minimum Hardware Requirements

- Machine class: Ultra 10 workstation or better
- Memory: 1 GB
- Disk space: 70 MB required for installation, 2X design files size disk space required for .vcd patterns, 1X design files size disk space required for STIL/.wgl patterns
- OS versions: Solaris 6, 7, 8

Ordering Information

N1150A—software, manual, tutorial on CD. Requires a license (see options below)

SmarTest PG Full Product

- 110**—1-year floating license
- 120**—30-day floating license
- 130**—perpetual floating license
- 133**—1-year support for perpetual license (first year free)

SmarTest PG Scan Converter

- 330**—perpetual floating license
- 333**—1 year support for perpetual floating license (first year free)

SmarTest PG Training

H7220A-283—3-day training course that covers the basics of the software

Special Offer

Contact your Agilent sales representative to find out how you can obtain SmarTest PG free through the following special offers:

- Free 1-year license included with each new 93000 system (nodelocked to tester controller)
 - Free 30-day evaluation license
-

For More Information

For more information about Agilent and its products, go to www.agilent.com

For more information about Agilent Technologies semiconductor test products, applications, and services, visit our Web site: www.agilent.com/go/semiconductor or you can call one of the centers listed and ask to speak with a semiconductor test sales representative.

Americas

Brazil (11) 4197-3600
Canada (French) 1 877 894-4414
Canada (English) 1 800 447-8378
Mexico 33 134-5841
United States 1 800 447-8378

Asia/Asia Pacific

Australia 1800 629-485
China 800 810 0509
Hong Kong 852 2599 7889
India 1600 112 626
Japan 0120 421 345
Malaysia 1800 880 780
New Zealand 0800 738 378
Philippines 1800 1651 0135
Singapore 1800 276 3059
South Korea 080 778 0011
Taiwan 0800 047 662
Thailand 1800 2758-5822

Europe

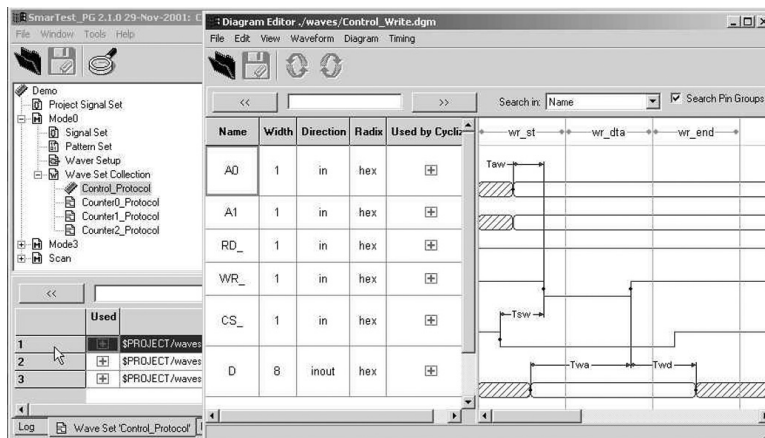
Austria (0) 1 25125 7006
Belgium (0) 2 404 9340
Denmark 70 13 15 15
Finland (0) 10 855 2100
France (0) 825 010 710
Germany (0) 1805 24 6333
Greece (0) 20 547 9999
Ireland (0) 1 890 924 204
Italy 02 9260 8484
Netherlands (0) 20 547 2111
Poland 22 608 14 40
Russia (0) 20 547 9999
Spain 91 631 3300
Sweden 0200 88 22 55
Switzerland (Italian) (0) 2 92 60 8484
Switzerland (German) (0) 1 735 9200
Switzerland (French) 080081 5353
United Kingdom (0) 7004 666666

Middle East

Israel 3 6892 500

Mentor Graphics is a trademark of Mentor Graphics Corporation in the U.S. and other countries.

Product specifications and descriptions in this document subject to change without notice.
Copyright© Agilent Technologies, Inc. 2002
Printed in USA October 2, 2002
5988-7364EN



A simplified user interface, combined with highly interactive debug tools and cyclization, makes SmarTest PG not only faster to use, but faster to learn as well. Hypertext error messages allow you to simply click on the error, make the change in the test, and immediately see the result to ensure the error was resolved.